

# Tab 1

## Resident Power Natural Gas & Electric Solutions, LLC

### Ownership

August "Gus" Fromuth: 99%  
Deborah O. Fromuth Revocable Trust: 1%

### Management

Bart Fromuth  
Managing Director

```
graph TD; A[Bart Fromuth<br/>Managing Director] --- B[Redacted Section];
```

The diagram shows a box for Bart Fromuth, Managing Director, connected by a solid line to a horizontal line. Below this horizontal line is a large black rectangular redaction box. A dashed line continues from the right side of the horizontal line, suggesting a continuation of the organizational structure that is otherwise redacted.

## PNE Energy Supply, LLC

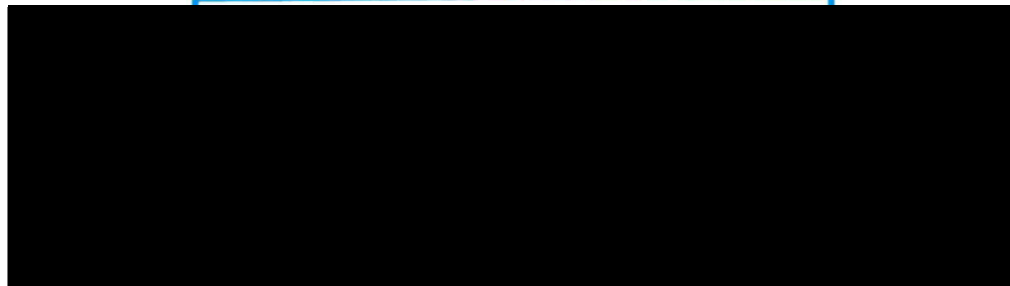
### Ownership

August "Gus" Fromuth: 99%  
Deborah O. Fromuth Revocable Trust: 1%

### Management

August "Gus" Fromuth  
Managing Director

Howard Plante  
President

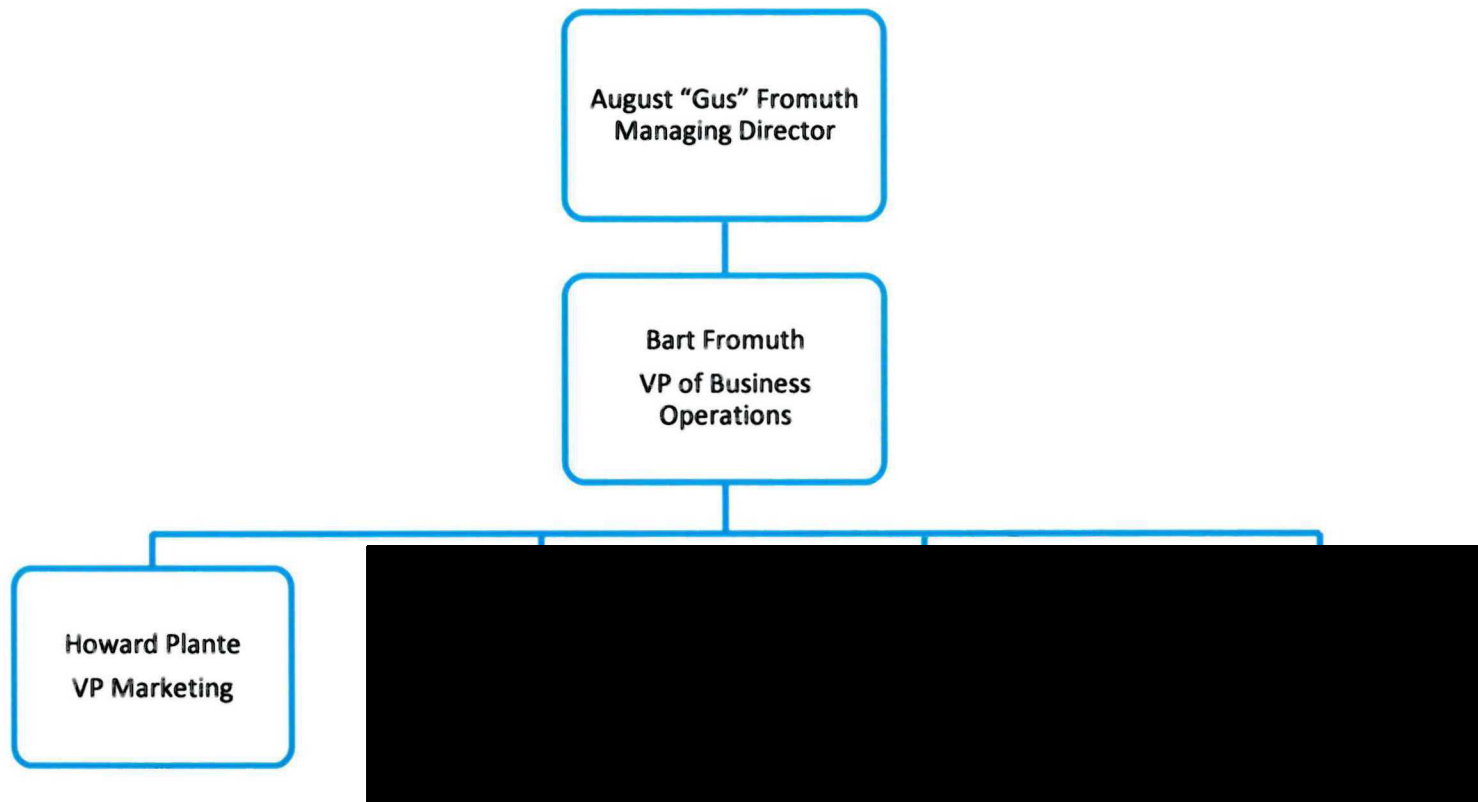


## Freedom Logistics, LLC

### Ownership

August "Gus" Fromuth: 99%  
Deborah O. Fromuth Revocable Trust: 1%

### Management



## Halifax American Energy Company, LLC

### Ownership

August "Gus" Fromuth: 99%

Deborah O. Fromuth Revocable Trust: 1%

### Management

